

"Who is responsible for this website ?"
"Where does this e-mail message originate from ?"
"What is the identity of person X, involved in criminal activities on the internet ?"
"Which party can have illegal content removed ?"

The internet is a comprehensive communication channel, which is more and more abused for illegal and criminal activities. In many investigations, e-mail communication and websites are involved.

Threads can be sent anonymously via a website or via e-mail. Illegal content (e.g. copyright infringements), can be published on a website. In general, the internet can be used as a place to plan and execute computer-related and other criminal activities.

The Webtracer is a professional, fully automated service, that allows to determine a persons identity on the internet quickly and efficiently and to conduct forensic research with a minimum amount of available information.

Successful forensic research on the internet today requires a vast knowledge on websites, e-mail, HTML, SMTP, IP addresses, proxy servers, Whois databases, SSL certificates, HTTP, HTTPS, e-mail headers, log files etc.

The Webtracer automatically establishes relationships between various resources on the internet. This way, the necessary contact information is revealed in order to start directed actions.

Technical information is visualised in a clear manner and interpretation does not require a technical background. Comprehensive background information clarifies the technical data and helps in making a correct interpretation.

The Webtracer is a framework in which any type of "resource" can be examined. More than 50 tests are executed automatically and immediately. This integrated approach makes the many "tools" superfluous, which are used today to examine only one isolated element. This approach also ensures a thorough investigation.

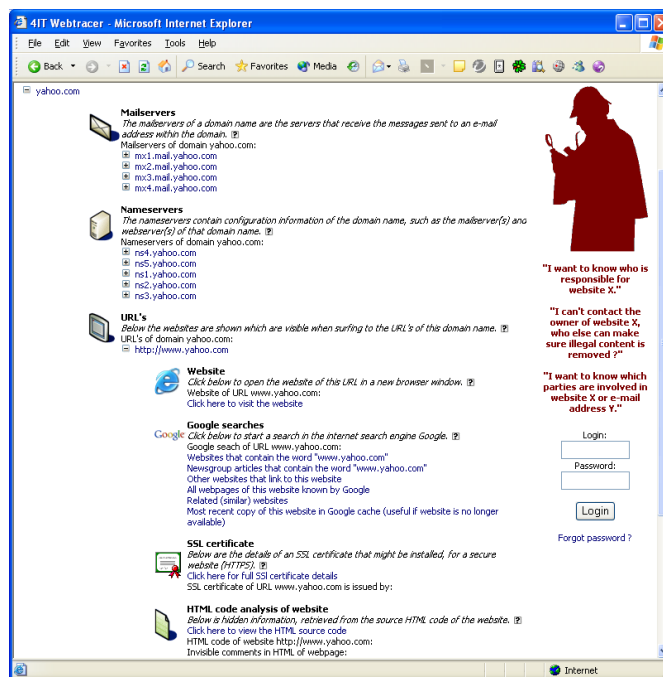
The Webtracer can use any kind of input to start reporting: an e-mail address, a website address, an IP address, a server name or a domain name. Furthermore, the Webtracer can analyse complete e-mail headers and log files. No matter

which communication medium on the internet is investigated, the results are thorough and complete.

A few examples of the technologies used by the Webtracer to search for relationships and to reveal identities:

- Look up of domain names, IP addresses and server names
- Look up of the owner, the technical and administrative contact and the agent of a domain name
- Look up and analysis of mail servers and name servers
- Analysis of an e-mail address

- Advanced searches using Google to retrieve authors of newsgroup articles, to find persons and to reveal other information
- Look up of the owner of an IP address
- Analysis of a website, its source code and SSL certificates
- Research of open proxy and open relay information
- Processing and analysis of e-mail headers
- Processing and analysis of log files of a web server or mail server



Each functionality is used recursively in a tree structure, in order to, starting with just one "resource", progressively more information is revealed. The clear reports are available immediately and can be used as

supporting information or evidence in a criminal investigation.

The Webtracer is the reference for forensic research on the internet. This solution is only available to police departments and certified companies specialised in forensic research and network security.

For more information and license fees, please contact:

4IT BVBA
Jan Palfijnstraat 23
9000 Gent
Belgium

Tel. +32 (0)2 706 50 71

info@4it.be
http://www.idtracer.info